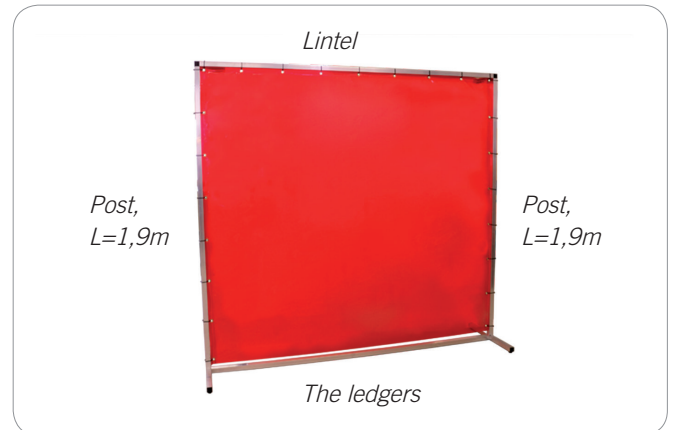


MOVABLE SCREEN

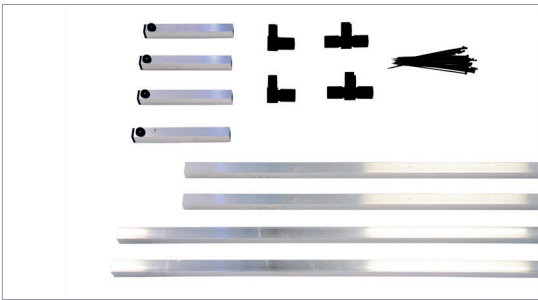
Flexible screen with feet

We recommend that you use rubber mallet during assembly.

For assemble of additional parts, See last page.

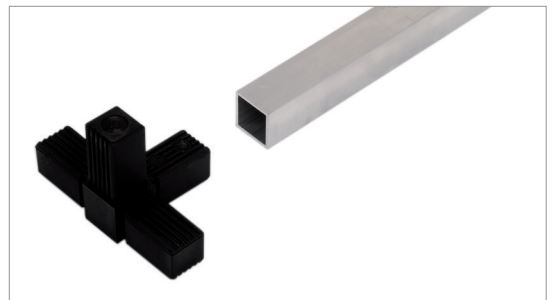


1



COMPONENTS: foot portion (4x), lintel (1x), the ledgers (1x), posts (2x), four-way plug (2x), 90° plug (2x), cable ties.

2



Assemble the four-way plugs in the ledgers.

3



Assemble the feet on the four-way plugs.

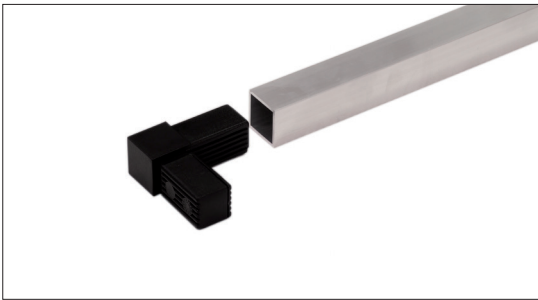
4



Assemble the posts.



5



Assemble the 90° plugs into the lintel.

6



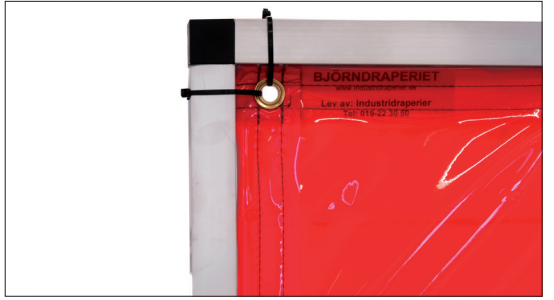
Assemble the remainder of the frame.

7



Hang the curtain at the top with the cable ties.
NOTE! Do not tighten the cable ties.

8



We recommend using 2 cable ties in the corners.

9



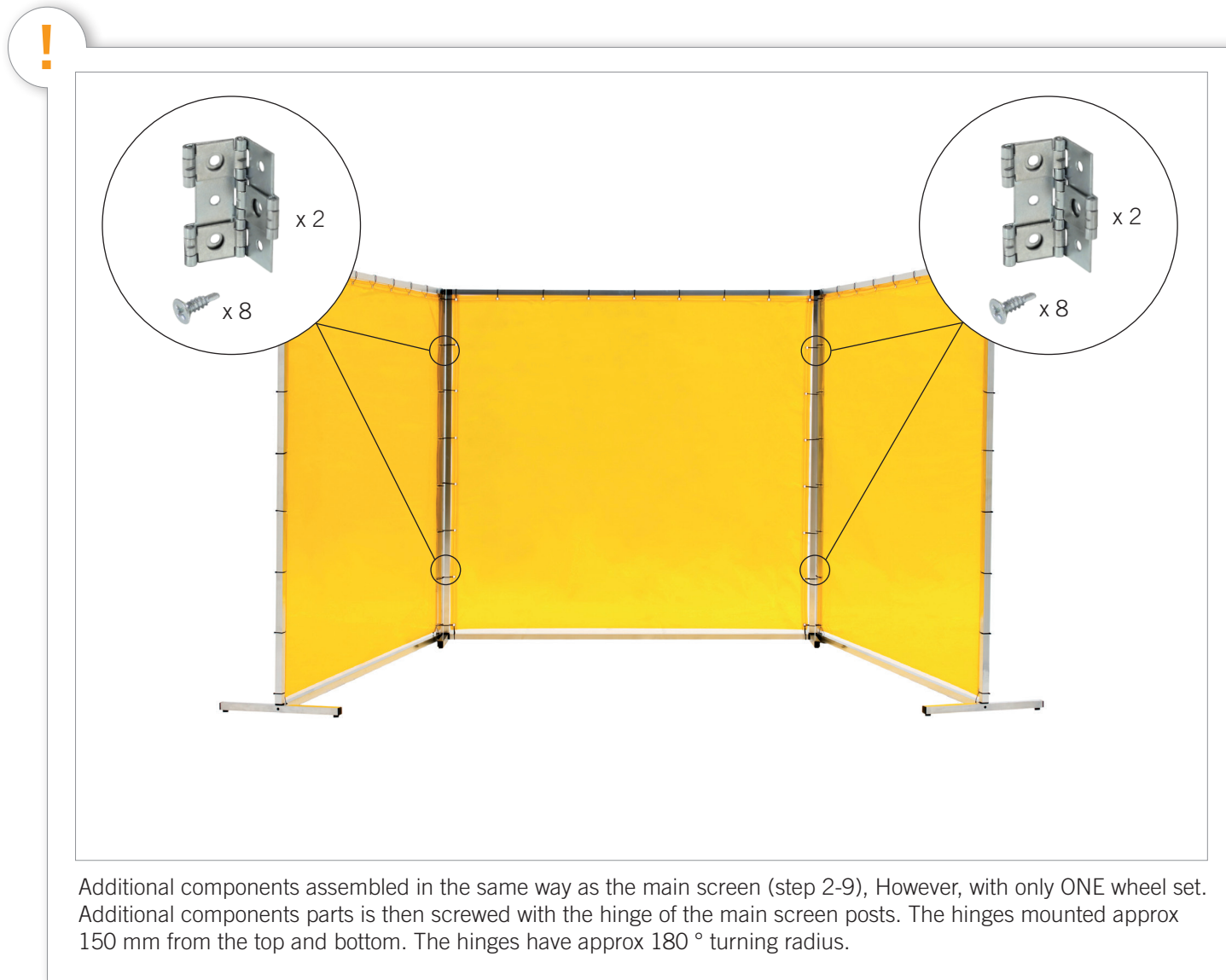
Assemble the remaining cable ties loose.
Tension then little by little around. DONE!

**IF YOU HAVE QUESTIONS OR
NEED HELP WITH INSTALLATION?**

CALL US AT

+46 (0)19 - 22 30 50

ADDITIONAL COMPONENTS



Additional components assembled in the same way as the main screen (step 2-9), However, with only ONE wheel set. Additional components parts is then screwed with the hinge of the main screen posts. The hinges mounted approx 150 mm from the top and bottom. The hinges have approx 180 ° turning radius.

IF YOU HAVE QUESTIONS OR NEED HELP WITH INSTALLATION?
CALL US AT

+46 (0)19 - 22 30 50